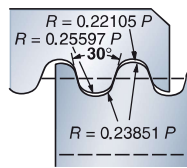
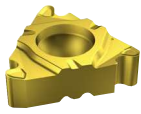
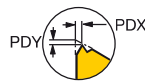


# CoroThread® 266 wisselplaat voor draadsnijden

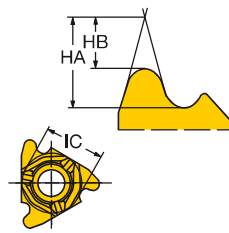
Rond 30° Volprofiel



STDNO  
TCTR



DIN 405  
IT 7-6



## Uitwendige rechtse draad

TPI	NT	Bestelcode	P		M		K		N		S		H		Afmetingen, mm				
			1020	1125	1020	1125	1020	1125	1020	1125	1020	1125	1020	1125	1135	HA	HB	PDX	PDY
			16	10.0	1	266RG-16RN01A100M	*	*	*	*	*	*	*	*	*	*	*	*	2.97
8.0	1	266RG-16RN01A080M	*	*	*	*	*	*	*	*	*	*	*	*	*	3.72	2.14	1.05	1.38
8.0	1	266RG-16RN01F080E	*	*	*	*	*	*	*	*	*	*	*	*	*	3.72	2.14	1.05	1.37
6.0	1	266RG-16RN01A060M	*	*	*	*	*	*	*	*	*	*	*	*	*	4.98	2.86	1.50	1.43
6.0	1	266RG-16RN01F060E	*	*	*	*	*	*	*	*	*	*	*	*	*	4.98	2.86	1.50	1.43
22	4.0	1	266RG-22RN01A040M	*	*	*	*	*	*	*	*	*	*	*	*	7.45	4.30	2.60	1.38
4.0	1	266RG-22RN01F040E	*	*	*	*	*	*	*	*	*	*	*	*	*	7.45	4.30	2.60	1.38

## Uitwendige linkse draad

TPI	NT	Bestelcode	P		M		K		N		S		H		Afmetingen, mm			
			1020	1125	1020	1125	1020	1125	1020	1125	1020	1125	1020	1125	HA	HB	PDX	PDY
			16	10.0	1	266LG-16RN01A100M	*	*	*	*	*	*	*	*	*	*	*	2.97
8.0	1	266LG-16RN01A080M	*	*	*	*	*	*	*	*	*	*	*	*	3.72	2.14	1.05	1.32
6.0	1	266LG-16RN01A060M	*	*	*	*	*	*	*	*	*	*	*	*	4.98	2.86	1.50	1.43
22	4.0	1	266LG-22RN01A040M	*	*	*	*	*	*	*	*	*	*	*	7.45	4.30	2.60	1.38

## Inwendige rechtse draad

TPI	NT	Bestelcode	P		M		K		N		S		H		Afmetingen, mm			
			1020	1125	1020	1125	1020	1125	1020	1125	1020	1125	1020	1125	HA	HB	PDX	PDY
			16	10.0	1	266RL-16RN01A100M	*	*	*	*	*	*	*	*	*	*	*	2.87
8.0	1	266RL-16RN01A080M	*	*	*	*	*	*	*	*	*	*	*	*	3.56	1.97	1.05	1.30
6.0	1	266RL-16RN01A060M	*	*	*	*	*	*	*	*	*	*	*	*	4.79	2.66	1.35	1.50
6.0	1	266RL-16RN01F060E	*	*	*	*	*	*	*	*	*	*	*	*	4.79	2.66	1.35	1.45
22	4.0	1	266RL-22RN01A040M	*	*	*	*	*	*	*	*	*	*	*	7.17	3.98	2.60	1.35
4.0	1	266RL-22RN01F040E	*	*	*	*	*	*	*	*	*	*	*	*	7.17	3.98	2.60	1.35

## Inwendige linkse draad

TPI	NT	Bestelcode	P		M		K		N		S		H		Afmetingen, mm			
			1020	1125	1020	1125	1020	1125	1020	1125	1020	1125	1020	1125	HA	HB	PDX	PDY
			16	10.0	1	266LL-16RN01A100M	*	*	*	*	*	*	*	*	*	*	*	2.87
8.0	1	266LL-16RN01A080M	*	*	*	*	*	*	*	*	*	*	*	*	3.59	2.00	1.05	1.30
6.0	1	266LL-16RN01A060M	*	*	*	*	*	*	*	*	*	*	*	*	4.79	2.66	1.35	1.45
22	4.0	1	266LL-22RN01A040M	*	*	*	*	*	*	*	*	*	*	*	7.17	3.98	2.60	1.35

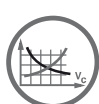
R = Rechts, L = Links



C30



C39



C73



C83



H36



H35



H26