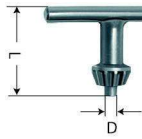


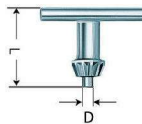
Drill chuck keys BFS

A01

 Keys with **DIN tothing 6349** for key-type drill chucks


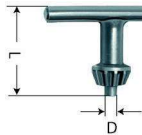
Item no.	Size	D mm	L mm	Weight approx. g
026411	S1	4	30	25
205989	S2A	6	41	50
025835	S3	8	50	100
025839	S4	9	55	115

A01

 Keys with **DIN tothing 6349** for key-type drill chucks


Item no.	Size	D mm	L mm	Weight approx. g
309380	S2A T	6	42	50
309382	S3 T	8	51	90

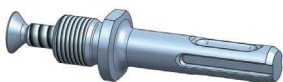
A01

 Key with **Jacobs-tothing** for key-type drill chucks


Item no.	Size	D mm	L mm	Weight approx. g
307319	S14	6,1	30	50

Accessories

A01

SDS plus adapter for drill chucks with 1/2"-20 mount


Item no.	Size	Mount	L mm	Weight approx. g
1322404	1/2"-20	SDS plus	62	50

The adapter serves as a connection to use a conventional drill chuck on hammers with SDS plus mounting. With deactivated hammer function the usage of cylindrical drill bits is now possible. The scope of delivery includes a safety screw with left-hand thread M6x23.

Assembly instruction:

Assemble the SDS adapter to the chuck with 50 Nm.
Fix the safety-screw with approx. 3-5 Nm.