

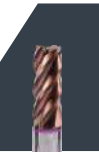
**D** VHM-Schrupfräser 45°  
lang, DIN 6527L

**E** Solid carbide roughing end mills  
45° long series, DIN 6527L

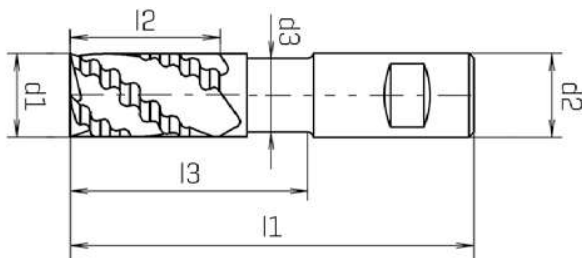
**I** Frese frontali MDI a  
sgrossare 45° serie lunga,  
DIN 6527L



<b>VHM Carbide MDI</b>				
	<b>Z=4-5</b>	<b>DIN 6527L</b>		
	<b>&lt;400 N/mm²</b>		<b>&lt;850 N/mm²</b>	
	<b>&lt;1300 N/mm²</b>		<b>&lt;850 N/mm²</b>	<b>INOX</b>
<b>INOX</b>	<b>&gt;850 N/mm²</b>	<b>GRAUGUSS CAST IRON GHISA GRIGIA</b>	<b>Ti</b>	<b>Cu, Ms</b>



VHM-Fräser  
Solid carbide milling cutters  
Frese in metallo duro integrale



ALUNIT-S®

d1 <sub>h10</sub> mm	d2 <sub>h6</sub> mm	d3 mm	l1 mm	l2 mm	l3 mm		Z	Code 7087 Art.-Nr.
<b>6,00</b>	6,00	5,60	57	13	20	0,20	4	0708700600100
<b>8,00</b>	8,00	7,50	63	19	25	0,20	4	0708700800100
<b>10,00</b>	10,00	9,50	72	22	30	0,20	4	0708701000100
<b>12,00</b>	12,00	11,50	83	26	36	0,35	4	0708701200100
<b>16,00</b>	16,00	15,50	92	32	42	0,35	5	0708701600100
<b>20,00</b>	20,00	19,50	104	38	52	0,35	5	0708702000100