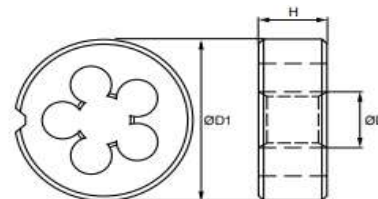


MF - HSS snijkussens - DIN13

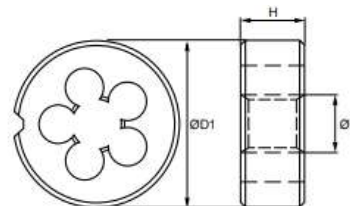


maykestag
Prototap

Artikelnr: **5613**

MF	D	D1	H	MF	D	D1	H	MF	D	D1	H
MF 2,5 x 0,35	2,5	16	5	MF 13 x 1,5	13,0	38	10	MF 22 x 0,75	22,0	55	16
MF 2,6 x 0,35	2,6	16	5	MF 14 x 0,5	14,0	38	10	MF 22 x 1,0	22,0	55	16
MF 3 x 0,35	3,0	20	5	MF 14 x 0,75	14,0	38	10	MF 22 x 1,25	22,0	55	16
MF 3,5 x 0,35	3,5	20	5	MF 14 x 1,0	14,0	38	10	MF 22 x 1,5	22,0	55	16
MF 4 x 0,35	4,0	20	5	MF 14 x 1,25	14,0	38	10	MF 22 x 2,0	22,0	55	16
MF 4 x 0,5	4,0	20	5	MF 14 x 1,5	14,0	38	10	MF 23 x 1,0	23,0	55	16
MF 4,5 x 0,5	4,5	20	5	MF 15 x 0,75	15,0	38	10	MF 23 x 1,5	23,0	55	16
MF 5 x 0,5	5,0	20	5	MF 15 x 1,0	15,0	38	10	MF 24 x 0,5	24,0	55	16
MF 5 x 0,75	5,0	20	7	MF 15 x 1,5	15,0	38	10	MF 24 x 0,75	24,0	55	16
MF 5,5 x 0,5	5,5	20	5	MF 16 x 0,5	16,0	45	14	MF 24 x 1,0	24,0	55	16
MF 6 x 0,5	6,0	20	5	MF 16 x 0,75	16,0	45	14	MF 24 x 1,25	24,0	55	16
MF 6 x 0,75	6,0	20	7	MF 16 x 1,0	16,0	45	14	MF 24 x 1,5	24,0	55	16
MF 7 x 0,5	7,0	25	9	MF 16 x 1,25	16,0	45	14	MF 24 x 2,0	24,0	55	16
MF 7 x 0,75	7,0	25	9	MF 16 x 1,5	16,0	45	14	MF 25 x 1,0	25,0	55	16
MF 8 x 0,5	8,0	25	9	MF 17 x 1,0	17,0	45	14	MF 25 x 1,5	25,0	55	16
MF 8 x 0,75	8,0	25	9	MF 17 x 1,5	17,0	45	14	MF 26 x 1,0	26,0	55	16
MF 8 x 1,0	8,0	25	9	MF 18 x 0,5	18,0	45	14	MF 26 x 1,5	26,0	55	16
MF 9 x 0,5	9,0	25	9	MF 18 x 0,75	18,0	45	14	MF 26 x 2,0	26,0	55	16
MF 9 x 0,75	9,0	25	9	MF 18 x 1,0	18,0	45	14	MF 27 x 1,0	27,0	65	18
MF 9 x 1,0	9,0	25	9	MF 18 x 1,25	18,0	45	14	MF 27 x 1,5	27,0	65	18
MF 10 x 0,5	10,0	30	11	MF 18 x 1,5	18,0	45	14	MF 27 x 2,0	27,0	65	18
MF 10 x 0,75	10,0	30	11	MF 18 x 2,0	18,0	45	14	MF 28 x 1,0	28,0	65	18
MF 10 x 1,0	10,0	30	11	MF 19 x 1,0	19,0	45	14	MF 28 x 1,5	28,0	65	18
MF 10 x 1,25	10,0	30	11	MF 19 x 1,5	19,0	45	14	MF 28 x 2,0	28,0	65	18
MF 11 x 1,0	11,0	30	11	MF 20 x 0,5	20,0	45	14	MF 29 x 1,5	29,0	65	18
MF 11 x 1,25	11,0	30	11	MF 20 x 0,75	20,0	45	14	MF 30 x 1,0	30,0	65	18
MF 12 x 0,5	12,0	38	10	MF 20 x 1,0	20,0	45	14	MF 30 x 1,5	30,0	65	18
MF 12 x 0,75	12,0	38	10	MF 20 x 1,25	20,0	45	14	MF 30 x 2,0	30,0	65	18
MF 12 x 1,0	12,0	38	10	MF 20 x 1,5	20,0	45	14	MF 30 x 2,5	30,0	65	18
MF 12 x 1,25	12,0	38	10	MF 20 x 2,0	20,0	45	14	MF 30 x 3,0	30,0	65	25
MF 12 x 1,5	12,0	38	10	MF 21 x 1,0	21,0	45	14	MF 32 x 1,0	32,0	65	18
MF 13 x 0,5	13,0	38	10	MF 21 x 1,5	21,0	45	14	MF 32 x 1,5	32,0	65	18
MF 13 x 1,0	13,0	38	10	MF 22 x 0,5	22,0	55	16	MF 32 x 2,0	32,0	65	18

MF - HSS snijkussens - DIN13

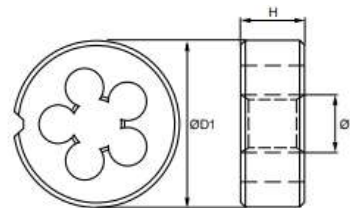


maykestag
Prototap

Artikelnr: **5613**

MF	D	D1	H	MF	D	D1	H	MF	D	D1	H
MF 32 x 3,0	32,0	65	25	MF 45 x 1,5	45,0	90	22	MF 60 x 4,0	60,0	105	36
MF 33 x 1,5	33,0	65	18	MF 45 x 2,0	45,0	90	22	MF 62 x 1,5	62,0	105	22
MF 33 x 2,0	33,0	65	18	MF 45 x 3,0	45,0	90	36	MF 62 x 2,0	62,0	105	22
MF 33 x 3,0	33,0	65	25	MF 46 x 1,5	46,0	90	22	MF 62 x 3,0	62,0	105	36
MF 34 x 1,0	34,0	65	18	MF 48 x 1,0	48,0	90	22	MF 62 x 4,0	62,0	105	36
MF 34 x 1,5	34,0	65	18	MF 48 x 1,5	48,0	90	22	MF 63 x 1,5	63,0	105	22
MF 34 x 2,0	34,0	65	18	MF 48 x 2,0	48,0	90	22	MF 64 x 1,5	64,0	120	22
MF 35 x 1,0	35,0	65	18	MF 48 x 3,0	48,0	90	36	MF 64 x 2,0	64,0	120	22
MF 35 x 1,5	35,0	65	18	MF 50 x 1,5	50,0	90	22	MF 64 x 3,0	64,0	120	36
MF 35 x 2,0	35,0	65	18	MF 50 x 2,0	50,0	90	22	MF 64 x 4,0	64,0	120	36
MF 36 x 1,0	36,0	65	18	MF 50 x 3,0	50,0	90	36	MF 65 x 1,5	65,0	120	22
MF 36 x 1,5	36,0	65	18	MF 52 x 1,5	52,0	90	22	MF 65 x 2,0	65,0	120	22
MF 36 x 2,0	36,0	65	18	MF 52 x 2,0	52,0	90	22	MF 65 x 3,0	65,0	120	36
MF 36 x 3,0	36,0	65	25	MF 52 x 3,0	52,0	90	36	MF 65 x 4,0	65,0	120	36
MF 37 x 1,5	37,0	65	18	MF 54 x 1,5	54,0	105	22	MF 68 x 1,5	68,0	120	22
MF 38 x 1,0	38,0	75	20	MF 54 x 2,0	54,0	105	22	MF 68 x 2,0	68,0	120	22
MF 38 x 1,5	38,0	75	20	MF 54 x 3,0	54,0	105	36	MF 68 x 3,0	68,0	120	36
MF 38 x 2,0	38,0	75	20	MF 54 x 4,0	54,0	105	36	MF 68 x 4,0	68,0	120	36
MF 38 x 3,0	38,0	75	30	MF 55 x 1,5	55,0	105	22	MF 70 x 1,5	70,0	120	22
MF 39 x 1,5	39,0	75	20	MF 55 x 2,0	55,0	105	22	MF 70 x 2,0	70,0	120	22
MF 39 x 2,0	39,0	75	20	MF 55 x 3,0	55,0	105	36	MF 70 x 3,0	70,0	120	36
MF 39 x 3,0	39,0	75	30	MF 55 x 4,0	55,0	105	36	MF 70 x 4,0	70,0	120	36
MF 40 x 1,0	40,0	75	20	MF 56 x 1,5	56,0	105	22	MF 72 x 1,5	72,0	120	22
MF 40 x 1,5	40,0	75	20	MF 56 x 2,0	56,0	105	22	MF 72 x 2,0	72,0	120	22
MF 40 x 2,0	40,0	75	20	MF 56 x 3,0	56,0	105	36	MF 72 x 3,0	72,0	120	36
MF 40 x 3,0	40,0	75	30	MF 56 x 4,0	56,0	105	36	MF 72 x 4,0	72,0	120	36
MF 42 x 1,0	42,0	75	20	MF 58 x 1,5	58,0	105	22	MF 74 x 1,5	74,0	120	22
MF 42 x 1,5	42,0	75	20	MF 58 x 2,0	58,0	105	22	MF 74 x 2,0	74,0	120	22
MF 42 x 2,0	42,0	75	20	MF 58 x 3,0	58,0	105	36	MF 74 x 3,0	74,0	120	36
MF 42 x 3,0	42,0	75	30	MF 58 x 4,0	58,0	105	36	MF 74 x 4,0	74,0	120	36
MF 44 x 1,5	44,0	90	22	MF 60 x 1,5	60,0	105	22	MF 75 x 1,5	75,0	120	22
MF 44 x 2,0	44,0	90	22	MF 60 x 2,0	60,0	105	22	MF 75 x 2,0	75,0	120	22
MF 45 x 1,0	45,0	90	22	MF 60 x 3,0	60,0	105	36	MF 75 x 3,0	75,0	120	36

MF - HSS snijkussens - DIN13



maykestag
Prototap

Artikelnr: **5613**

MF	D	D1	H
MF 75 x 4,0	75,0	120	36
MF 76 x 1,5	76,0	120	22
MF 76 x 2,0	76,0	120	22
MF 76 x 3,0	76,0	120	36
MF 76 x 4,0	76,0	120	36
MF 78 x 1,5	78,0	120	22
MF 78 x 2,0	78,0	120	22
MF 78 x 3,0	78,0	120	36
MF 78 x 4,0	78,0	120	36
MF 80 x 1,5	80,0	120	22
MF 80 x 2,0	80,0	120	22
MF 80 x 3,0	80,0	120	36
MF 80 x 4,0	80,0	120	36
MF 82 x 1,5	82,0	130	25
MF 82 x 2,0	82,0	130	25
MF 82 x 3,0	82,0	130	36
MF 82 x 4,0	82,0	130	36
MF 84 x 1,5	84,0	130	25
MF 84 x 2,0	84,0	130	25
MF 84 x 3,0	84,0	130	36
MF 84 x 4,0	84,0	130	36
MF 85 x 1,5	85,0	130	25
MF 85 x 2,0	85,0	130	25
MF 85 x 3,0	85,0	130	36
MF 85 x 4,0	85,0	130	36
MF 86 x 1,5	86,0	140	22
MF 86 x 2,0	86,0	140	22
MF 86 x 3,0	86,0	140	22
MF 86 x 4,0	86,0	140	22
MF 88 x 1,5	88,0	140	22
MF 88 x 2,0	88,0	140	22
MF 88 x 3,0	88,0	140	22
MF 88 x 4,0	88,0	140	22

MF	D	D1	H
MF 90 x 1,5	90,0	140	22
MF 90 x 2,0	90,0	140	22
MF 90 x 3,0	90,0	140	22
MF 90 x 4,0	90,0	140	22
MF 92 x 1,5	92,0	140	22
MF 92 x 2,0	92,0	140	22
MF 92 x 3,0	92,0	140	22
MF 92 x 4,0	92,0	140	22
MF 95 x 1,5	95,0	140	22
MF 95 x 2,0	95,0	140	22
MF 95 x 3,0	95,0	140	22
MF 95 x 4,0	95,0	140	22
MF 96 x 1,5	96,0	140	22
MF 96 x 2,0	96,0	140	22
MF 96 x 3,0	96,0	140	22
MF 96 x 4,0	96,0	140	22
MF 98 x 1,5	98,0	150	25
MF 98 x 2,0	98,0	150	25
MF 98 x 3,0	98,0	150	25
MF 98 x 4,0	98,0	150	25
MF 100 x 1,5	100,0	150	25
MF 100 x 2,0	100,0	150	25
MF 100 x 3,0	100,0	150	25
MF 100 x 4,0	100,0	150	25
MF 105 x 1,5	105,0	150	25
MF 105 x 2,0	105,0	150	25
MF 105 x 3,0	105,0	150	25
MF 105 x 4,0	105,0	150	25
MF 110 x 1,5	110,0	160	25
MF 110 x 2,0	110,0	160	25
MF 110 x 3,0	110,0	160	25
MF 110 x 4,0	110,0	160	25